

POTTER PARK

ZOO

ANNUAL  
REPORT  
2025

Potter Park Zoo  
1301 S. Pennsylvania Ave.  
Lansing, MI 48912

Phone: 517.483.4222  
Fax: 517.316.3894  
[www.potterparkzoo.org](http://www.potterparkzoo.org)



In 2025, 195,237 guests visited Potter Park Zoo, reinforcing the zoo's role as a welcoming community destination and a trusted place for learning, connection, and conservation.

Throughout the year, the zoo continued to offer a variety of free and reduced-admission opportunities, ensuring access for families across our region. These incentive days and programs welcomed thousands of guests who might not otherwise have been able to visit, strengthening our commitment to inclusivity and community engagement.

## 2025 Free or Reduced Admission Opportunities Included:

Ingham County and City of Lansing Free Monday Mornings	8,315
Zoo Days	1,966
Wild Wanderers Club	1,546
Mother's Day	984
Ingham County Free Day	605
College Day	219
Father's Day	290
Grandparents Day	92
Veterans Day	7
Fourth of July	20

These initiatives reflect Potter Park Zoo's belief that meaningful experiences with animals and nature should be accessible to everyone.

ACCREDITED BY THE  
**ASSOCIATION  
OF ZOOS &  
AQUARIUMS**

Potter Park Zoo has been accredited by the AZA for over 30 years. We are proud to continue to meet and exceed the standards set by AZA in animal welfare, veterinary care, conservation, education, guest services and more. We pride ourselves on being an enriching educational resource for our community.

# TABLE OF CONTENTS

- 4** Mission & Goals
- 5** Directors Letter
- 6** Advancing Animal Care
- 8** Remembering Doppsee
- 9** Our Animals
- 10** Conservation in Action
- 11** Accessibility & Community Engagement
- 12** Veterinary Highlights
- 14** Education Programs
- 15** Special Events
- 16** Volunteers & Members
- 17** Marketing & Communications
- 18** Zoo Team
- 19** Fun Year-Round
- 20** Donor Recognition
- 22** Zoo Advisory Board
- 23** Potter Park Zoological Society
- 24** Fun Facts



## **MISSION**

*Inspiring Conservation  
of Animals and the  
Natural World.*

**POTTER PARK**



## **OUR GOALS**

*Excellent Animal Welfare  
Impactful Conservation  
Financial Sustainability  
Valuing Diversity*



A letter from  
**Cynthia Wagner, Potter Park Zoo Director**  
and  
**Amy L. Morris-Hall,**  
**Potter Park Zoological Society Director**

Dear Friends of Potter Park Zoo,

As we reflect on 2025, we are proud to share a year defined by progress, partnership, and a continued commitment to animal welfare, conservation, and community connection.

This year, 195,237 guests visited Potter Park Zoo, a strong reminder of the role our zoo plays as a place of learning, inspiration, and conservation. From daily visits to special events, our community showed up in meaningful ways, supporting our mission and the animals in our care.

One of the most significant milestones of 2025 was the opening of our Animal Health Facility. This state-of-the-art space represents a major investment in the wellbeing of our animals and the professionals who care for them. Designed with input from our veterinary and animal care teams, the facility allows us to provide more efficient, compassionate, and advanced care, while also creating new opportunities for education and transparency.

We celebrated conservation successes, expanded educational programming, and continued to grow our impact through events, outreach, and accessibility initiatives. At the same time, we experienced moments of loss, with the passing of Doppsee, our black rhinoceros, whose legacy continues to inspire our work and our community.

None of this would be possible without the dedication of our staff and volunteers, the generosity of our donors and partners, and the support of our visitors and members. Together, you help ensure Potter Park Zoo remains a trusted leader in animal care and conservation.

Thank you for being part of our journey. We look forward to the year ahead and the opportunities it holds.

Sincerely,

Cynthia D. Wagner, Zoo Director

Amy L. Morris-Hall, Zoological Society Director

# ADVANCING ANIMAL CARE



**“It gives our team the tools and space needed to do our work thoughtfully and with animal wellbeing at the center of every decision.”**

**Dr. Ronan Eustace,  
Zoo Animal Health Director**

## **The Animal Health Facility at Potter Park Zoo**

In 2025, Potter Park Zoo achieved a major milestone with the opening of its Animal Health Facility, a purpose-built space dedicated to advancing veterinary care and animal wellbeing.

This new facility reflects the zoo’s long-term commitment to excellence in animal welfare, conservation, and professional standards. Designed to support a wide range of species and medical needs, it allows veterinary and animal care teams to provide more efficient and comprehensive care for the animals entrusted to them.

## **Purpose and Impact**

The Animal Health Facility centralizes veterinary services, improving workflow and collaboration while reducing stress for animals during examinations and procedures. Dedicated treatment and examination areas, diagnostic spaces, and quarantine rooms were designed with safety, efficiency, and animal comfort in mind.

By bringing these resources together, the zoo is better equipped to respond to both routine and complex medical needs, ensuring animals receive the highest level of care at every stage of life.



## From Vision to Reality

The Animal Health Facility was the result of years of planning, collaboration, and community support. Veterinary and animal care staff played a key role in shaping the design to ensure it met real-world needs and future goals.

The zoo is grateful to the donors, partners, and elected officials whose support made this important investment possible. Their contributions created a lasting resource that will benefit animals, staff, and the broader community for years to come.

## Opening the Doors

The facility officially opened with a ribbon cutting and public open house, welcoming guests behind the scenes to learn how veterinary care supports animal welfare and conservation. Community members had the opportunity to tour the space, meet members of the veterinary team, and gain a deeper understanding of the care animals receive every day.



## Looking Ahead

In 2026, Potter Park Zoo plans to expand opportunities for guests to view and tour the Animal Health Facility, further strengthening transparency, education, and connection between the zoo and its community.

This facility stands as a meaningful investment in animal wellbeing and a reflection of the zoo's responsibility to provide exceptional care, now and into the future.



# REMEMBERING DOPPSEE



## A Legacy of Care, Connection, and Conservation

In 2025, Potter Park Zoo mourned the loss of Doppsee, our female eastern black rhinoceros. Her presence shaped the zoo in lasting ways and left an enduring impact on staff, guests, and our community.



Doppsee arrived at the zoo in 2011 and quickly became a powerful ambassador for her species. Known for her calm nature, curiosity, and love of interaction, she helped thousands of guests connect with black rhinos and understand the challenges facing them in the wild. Through these daily interactions, Doppsee inspired curiosity, empathy, and a deeper commitment to conservation.



In 2019, Doppsee became a mother with the birth of her calf, Jaali, a significant achievement for the Species Survival Plan. Observing her maternal behavior provided valuable insight into black rhino

care and reproduction, contributing to the collective knowledge that supports the species' future.

Throughout her life, Doppsee participated in multiple veterinary and research studies that advanced the understanding of black rhino health and management in zoos around the world. Her involvement continues to inform best practices for rhinos in human care and conservation efforts worldwide.

In her final weeks, Doppsee received around-the-clock care from the zoo's veterinary and animal care teams. When her condition declined and treatment was no longer humane, the decision was made to allow her to pass peacefully, surrounded by those who knew and loved her.

Doppsee was a teacher, a mother, a research partner, and a special member of the zoo family. Her legacy lives on through Jaali, the knowledge she helped provide, and the many lives she touched.

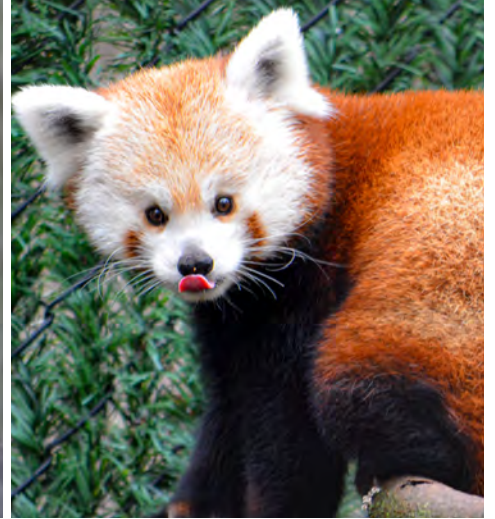
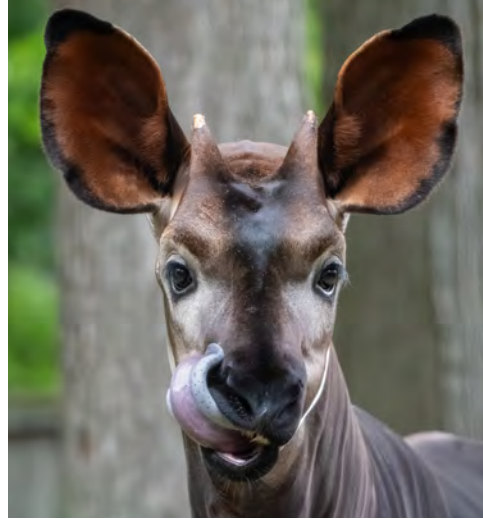
# OUR ANIMALS



**331 Total Animals**



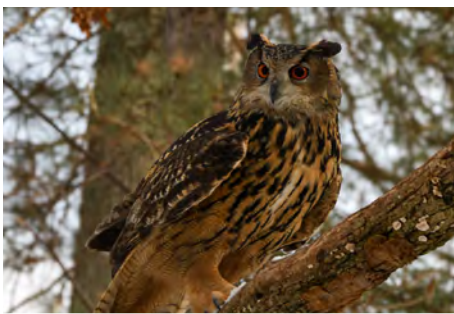
**87 Species**



**110 Mammals**

Potter Park Zoo is home to a diverse and dynamic collection of animals that support our mission and goals.

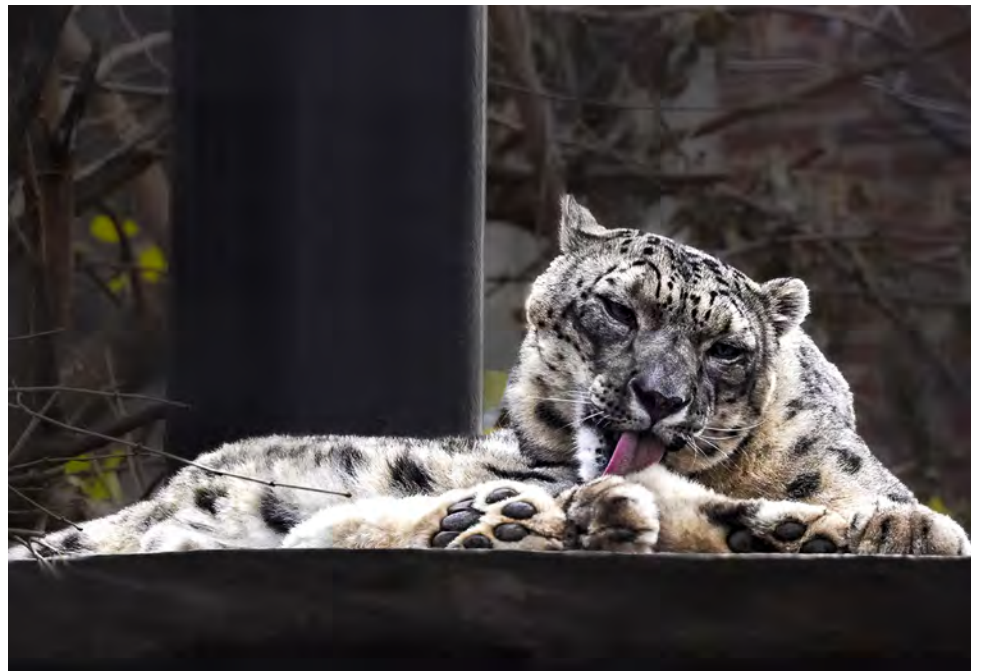
In 2025, the zoo cared for 334 animals representing 87 species, including mammals, birds, reptiles, and amphibians. Each species plays a role in connecting guests to wildlife and highlighting the importance of protecting biodiversity.



**57 Birds**



**164 Reptiles and Amphibians**



# CONSERVATION IN ACTION

Conservation is at the heart of Potter Park Zoo's mission. In 2025, the zoo supported conservation efforts locally and globally through research, partnerships, fundraising, and hands-on field work that benefits wildlife and habitats around the world.

Potter Park Zoo continued its participation in a collaborative Blanding's turtle headstarting program led by the Michigan Natural Features Inventory. This initiative addresses high rates of nest and hatchling predation by incubating eggs, caring for young turtles, and releasing them once they are larger and better prepared for survival in the wild. In 2025, the zoo successfully raised and released two Blanding's turtles that arrived as salvaged eggs, with more than 40 hatchlings currently being reared for future release. This work supports long-term population recovery for a Michigan species of special concern.



## Conservation Fundraising

Funds raised through zoo programs and events directly supported conservation initiatives in 2025, including:

### Quarters for Conservation

Pallas's Cat	\$442.48	Conservation Bookmark Sales	\$7,817
Black Rhino	\$281.37	Bowling for Rhinos- donated to IRF	\$6,910
Blanding's Turtle	\$226.56	AAZK Chapter Contributions	\$2,626
<b>Totals for 2025</b>	<b>\$950.41</b>		

## Conservation Projects and Partnerships

Zoo staff contributed to a wide range of conservation projects, including:

- Breeding and release of Puerto Rican crested toads
- Participation in the Great Lakes Piping Plover Recovery Program
- Eastern Massasauga Rattlesnake field research
- Salmon in the Classroom
- Blanding's turtle headstarting program



## Organizations Supported

Potter Park Zoo proudly supported organizations such as:



Through these efforts, the zoo continues to contribute meaningful action toward wildlife conservation while inspiring guests to be a part of the solution.

# ACCESSIBILITY

CREATING A WELCOMING EXPERIENCE FOR VISITORS OF ALL AGES AND ABILITIES.



## Zoo in Your Neighborhood

Through offsite programming and community outreach, the zoo reached 527 individuals beyond its gates in 2025. In addition, 5,513 guests visited the zoo at no cost using Zoo Passes, supporting families who may face financial barriers to visiting. These efforts ensure that zoo experiences remain accessible to the broader community.

Number of guests visiting with a zoo pass:  
**5,513**



## Expanding Accessible Experiences

In 2025, Potter Park Zoo achieved Wheel the World Accessibility Verified Certification, confirming that accessible features have been thoroughly reviewed and that staff are trained to welcome guests with accessibility needs. Additional improvements included the launch of a new audio tour covering all outdoor animal habitats and the installation of inclusive musical instruments in the playground, offering sensory-rich experiences for guests of all abilities.

Together, these efforts reflect the zoo's dedication to building an inclusive environment where everyone can connect with animals, nature, and one another.

## Celebrating 10 Years of FALCONERS



In 2025, Potter Park Zoo proudly celebrated the 10th anniversary of the FALCONERS Program, a sensory-friendly initiative launched in response to community feedback. Designed to support families with children on the autism spectrum and individuals with developmental or sensory challenges, FALCONERS offers monthly opportunities to experience the zoo in a quieter, more comfortable environment.

Over the past decade, the program has grown significantly, expanding to welcome individuals of all ages with a wide range of unique needs. Special FALCONERS nights are held during major events such as Boo at the Zoo and Wonderland



of Lights, allowing families to participate without overwhelming crowds or noise. In 2025, the program served 1,292 participants, surpassing 10,000 total participants since its launch.

The zoo's commitment to inclusion continues through staff training, volunteer support, and thoughtful accommodations that are available daily, including sensory bags, weighted lap pads, headphones, wheelchairs, electric carts, braille maps, animal signage transcribed to braille, quiet areas, family restrooms, and audio and visual tours.



In 2025, the completion of the new 5,800-square-foot Animal Health Facility marked a major milestone for Potter Park Zoo. The veterinary team extends sincere thanks to everyone who supported this important project, which significantly enhances the zoo's ability to provide advanced medical care for the animals entrusted to us.

The joint Zoological Medicine Fellowship with Binder Park Zoo entered its fourth year. Last year's fellow, Dr. Sam Rummel, was selected for the Ohio State University, Columbus Zoo, and The Wilds Zoological Medicine Residency Program. Dr. Ashlyn Heniff was selected as the new fellow. Dr. Heniff is a graduate of North Carolina State University and is originally from Indiana. She is currently collaborating with Drs. Kim and Ronan, along with pathologists from the University of Illinois and Michigan State University, on a study characterizing cutaneous apocrine gland neoplasia in African painted dogs (*Lycaon pictus*).

In 2025, Dr. Ronan, in collaboration with researchers at the Michigan State University Veterinary Diagnostic Laboratory, received a \$30,000 grant from the Frederick B. Shulak Endowed Research Fund in Avian Medicine. This research focuses on antifungal resistance in penguins housed in zoos across the United States. Aspergillosis remains a major cause of illness and mortality in penguins, and the findings from this study aim to improve treatment outcomes for affected birds in zoos and aquariums.

### *Scientific Publications (2025)*

Five peer-reviewed scientific publications were published in 2025, covering topics in endocrinology, anesthesia, infectious disease, diagnostic pathology, and exotic animal medicine.

1) Development and validation of deslorelin acetate assay and a pilot study on the pharmacokinetics of deslorelin acetate implant and fecal hormone monitoring in the domestic goat (*Capra hircus*). Rooney, T.A., Lehner, A., Zyskowski, J., Thompson, K. A., Eustace, R., Kozlowski, C., Clawitter, H., McDonald, M.,

Franklin, A., Powell, D., J. Buchweitz, J., and D. Agnew. 2025. *Journal of Zoo and Wildlife Medicine* 56(3): 548-557.

2) Evaluation of Thiafentanil-medetomidine-ketamine combinations for anesthesia without the use of a giraffe restraint device in adult zoo housed giraffe (*Giraffa camelopardalis*). Roeder, M., Bapodre-Villaverde, P., Sadler, R., Kinney, M.E., Swenson, J., Thibault, C. J., Eustace, R., and K. A. Thompson. 2025. *Journal of Zoo and Wildlife Medicine* 56(3): 483-496.



3) Antibody Reactivity to Afmp1p Antigen in Penguins with Probable and Confirmed Aspergillosis. Callico, A., Thurber, M.I., Bronson, E., Barnes, J., Burgdorf-Moisuk, A., Buscaglia, N.A., Duncan, A., Eustace, R., Gyimesi, Z., Hyatt, M., Neumann, S., Clabbers, C., Montiani-Ferreira, F. and C. Cray. 2025. *Front. Vet. Sci.* 12:1643473. doi: 10.3389/fvets.2025.1643473

4) Preliminary Reference Intervals for Capillary Zone Protein Electrophoresis Fractions and Examination of

MRP-126 as a Potential Marker of Inflammation in the Aldabra Giant Tortoise (*Geochelone gigantea*). Dianis, A.E., Thompson, K.A., Eustace, R., Soto, J., and C. Cray. 2025. *Journal of Zoological and Botanical Gardens* 6(1), <https://doi.org/10.3390/jzbg6010005>.

5. Endocrine diagnostics: principles and applications. Petroff, B.K., Eustace, R., Thompson, K.A., Kozlowski, C., and D. Agnew. 2025. *Veterinary Clinics of North America: Exotic Animal Practice* 28 (1): 1-14.



## **Scientific Presentations and Posters (2025)**

In addition, three scientific presentations and poster sessions were delivered at national and international conferences, sharing research findings with the broader zoological and veterinary community.

- 1) Pilot study: Assessment of Antifungal Resistance in Frozen and Formalin fixed tissue from confirmed cases of aspergillosis in Sphenisciformes. Eustace, R., Rinosh, M., Sayles, H., Perkins, M., and M. Tsoi. 2025. AAZV Annual Conference, Kansas City, USA.
- 2) Retrospective study of reproductive tract lesions in Giraffe (*Giraffa camelopardalis*) and Okapi (*Okapia johnstoni*). Kosiba, C., Moresco, A., Agnew, D., Eustace, R., and K. Thompson. 2025. Giraffe and Okapi Conference Poster Presentation, Palm Desert, USA.
- 3) Validation of the Novel Giraffe Immunoglobulin G (IgG) Radial Immunodiffusion Assay for Measurement of Serum IgG in Okapi (*Okapia johnstoni*). Hearth, G., Eustace, R., Bapodra-Villaverde, P., and K. Thompson. 2025. Giraffe and Okapi Conference Poster Presentation, Palm Desert, USA.

**These accomplishments reflect the veterinary team's continued commitment to advancing animal health, contributing to scientific knowledge, and supporting conservation through research and collaboration.**

# EDUCATION PROGRAMS

INSPIRING CONSERVATION OF ANIMALS AND THE NATURAL WORLD

Education is a cornerstone of Potter Park Zoo's mission. In 2025, the zoo continued to provide engaging, hands-on learning experiences that connect students, families, and educators to wildlife, conservation, and science.



42  
Teachers

893  
Students

10 Districts

## THE BIG ZOO LESSON

Big Zoo Lesson remained one of the zoo's most impactful educational offerings. This award-winning, immersive science program allows students to become scientists at the zoo for an entire week. In 2025, the program reached 893 students, with 42 teachers from 10 school districts participating. The program operated at maximum capacity, reflecting strong demand and lasting educational value.



330  
Unique Learners

## ZOOKAMBI

Zookambi, the zoo's popular summer camp program, provided fun and educational experiences for 330 campers entering grades 1 through 7. Campers explored topics such as Animal CSI, veterinary medicine, and animal adaptations through hands-on activities.



46  
Students

Aug. '24 — June '25

13 Districts  
5 Counties

## EATON RESA ANIMAL SCIENCE PROGRAM

For the 18th consecutive year, Potter Park Zoo partnered with Eaton RESA to host an on-site high school Animal Science course. In the 2024–2025 school year, 46 students from 13 school districts across five counties participated in this unique program, making the zoo one of only a few AZA-accredited institutions to host a course of this kind.



52,765  
Contacts

599 Volunteer Hours

## CONSERVATION EDUCATION STATIONS

Conservation Education Stations placed throughout the zoo significantly expanded guest engagement in 2025. These interactive stations nearly doubled previous years' reach, connecting with 52,765 guests with the support of 599 volunteer hours. The stations help visitors learn about animal adaptations, habitats, and conservation efforts in meaningful and approachable ways.



76  
Homeschool Zoo Crew

221  
Twilight Adventurers

## HOMESCHOOL ZOO CREW AND TWILIGHT ADVENTURES

**Homeschool Zoo Crew** served 76 students, offering structured learning opportunities for homeschool families focused on a variety of animal themed topics.

**Twilight Adventures** provided four after-hours experiences for 221 participants, combining conservation education with hands-on activities, games, and evening exploration of the zoo. Together, these programs reflect Potter Park Zoo's commitment to inspiring curiosity, fostering lifelong learning, and empowering future conservation stewards.

Special events continue to be a vital way Potter Park Zoo connects with the community, creates memorable experiences, and welcomes new audiences to the zoo. In 2025, zoo-hosted events brought 28,485 guests through the gates.



## ZOO NIGHTS: 1,309

Zoo Nights introduced several enhancements in 2025, including a new VIP ticket experience offering exclusive entertainment, a specialty cocktail, a private bar, and a VIP gift. Improvements were also made to the Designated Driver ticket, featuring a “Make Your Own Mocktail” bar to ensure all guests could enjoy a premium experience.



## ZOO DAYS: 3,325

Zoo Days featured a new collaboration with Zookambi Summer Camp and the Zoo Teen Program, resulting in a creative art exhibit that showcased camper artwork and conservation messages shared by Zoo Teens.



## MEMBER'S NIGHT: 942

Member's Night is a one-of-a-kind evening filled with education stations, fun kid's activities, and more! As a special treat, guests enjoyed a light meal featuring hotdogs, chips, drinks, and a sweet treat.



## BOO AT THE ZOO: 7,157

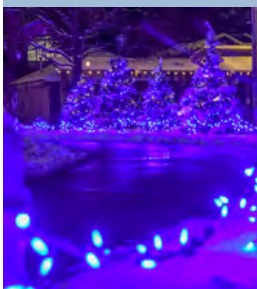
Boo at the Zoo saw meaningful improvements to accessibility and guest experience. A new Game Zone replaced bounce houses, creating a safer and more inclusive space for guests of all abilities. Across three weekends, seven ticketed activities, and one free attraction were offered, with activities interacted with 12,938 times.

New in 2025, the Dress a Skeleton program invited families, organizations, and community groups to decorate skeletons for display throughout the event, adding a creative and community-focused element to Boo at the Zoo.



## PRIVATE EVENTS: 6,207

In total, the zoo hosted 25 private events, including birthday parties, weddings, and corporate gatherings.



## WONDERLAND OF LIGHTS: 11,487

During Wonderland of Lights, the events team launched a holiday light recycling initiative, supporting sustainability, with over 1,300 pounds of lights from ending up in the landfill.

Through innovation, accessibility, and creativity, special events continue to play an important role in strengthening community connections and enhancing the guest experience.

# 2025 EVENTS

# VOLUNTEERS

Volunteers and members are essential to the success of Potter Park Zoo. In 2025, their dedication, generosity, and enthusiasm helped create meaningful experiences for guests while supporting the zoo's mission every day.

In 2025, 235 individual volunteers, including adult volunteers, Zoo Teens, and interns, contributed their time and talents across the zoo. Together, they completed 19,888 volunteer hours, supporting education programs, guest services, special events, and daily operations.

In addition, 694 group volunteers contributed 1,799 hours, bringing the total volunteer impact to 21,687 hours in 2025. These hours represent thousands of moments where volunteers helped guests connect with animals, conservation, and one another.



“As a volunteer at Potter Park Zoo, I get to participate in the joy our guests experience, from the excitement of a student understanding conservation in WILD School to the fun people have at Zoo Nights.”

— Diane Wilson, Potter Park Zoo Volunteer

3,510

Member Households

6,622

Adult Members

Zoo membership continued to be a strong connection between the community and the animals in our care. In 2025, Potter Park Zoo served 3,510 active member households, representing 6,622 adult members. Together, members made 14,148 visits to the zoo throughout the year.

Enhancements to the membership program included the launch of an eco-friendly digital membership card, providing a convenient, paper-free option while supporting sustainability goals. These improvements reflect the zoo's commitment to delivering value to members while caring for both wildlife and the environment.



**Volunteers and members play a vital role in advancing Potter Park Zoo's mission, and their continued support helps ensure the zoo remains a welcoming, vibrant place for all.**

# MEMBERS

# MARKETING & COMMUNICATIONS

In 2025, Potter Park Zoo continued to strengthen its connection with the community through strategic communications, digital engagement, and storytelling that highlights animal care, conservation, and guest experiences.

Social media and digital platforms played a key role in reaching both local and national audiences. Through engaging content, behind-the-scenes videos, and timely event promotion, the zoo expanded awareness of its mission and programs while keeping the community informed and connected.



## FACEBOOK

Facebook Followers:

**81,622**

Views:

**9,700,845**



(formerly Twitter)

Followers:

**10,222**

Impressions:

**190,817**



TikTok  
Followers:

**2,113**

Reach:

**83,573**



## INSTAGRAM

Instagram Followers:

**33,902**

Impressions:

**494,200**

These platforms allowed the zoo to share animal stories, conservation messaging, event updates, and milestone moments with a broad and diverse audience.

In 2025, Potter Park Zoo partnered with content creator **Jungle Jordan** to produce a series of engaging, educational videos highlighting our animals and conservation work. This collaboration generated more than 1.8 million total views across platforms, significantly expanding our reach and introducing new audiences to the Zoo.

## Website Engagement

The zoo's website continued to be a primary resource for planning visits and learning about animals and programs. The most visited pages in 2025 included:

1. Ticket Sales
2. Attractions
3. Upcoming Events
4. Animals
5. Zoo Map

Top online visitors came from cities including Ashburn, Detroit, Indianapolis, Lansing, and East Lansing, demonstrating both regional interest and broader reach.

Through thoughtful storytelling and accessible digital content, Potter Park Zoo continues to build meaningful connections that support visitation, engagement, and conservation awareness.



# ZOO TEAM 2025

Potter Park Zoo is powered by a dedicated team of professionals who bring expertise, compassion, and commitment to every aspect of zoo operations. In 2025, the zoo employed more than 150 team members, making it an important employer and community partner in the region.

From animal care and veterinary medicine to education, events, guest services, and facilities, staff work collaboratively to ensure the zoo operates safely, responsibly, and with animal wellbeing at

the forefront. Their efforts support not only daily operations, but also long-term goals in conservation, education, and accessibility.

The zoo also serves as a valuable learning environment for interns pursuing careers in animal care, conservation, education, communications, and events. These hands-on opportunities provide real-world experience while helping cultivate the next generation of professionals in the zoological field.

## 2025 Staffing Snapshot

### Ingham County Staff

Full Time Employees	31
Seasonal Employees	109

---

**Total Zoo Employees: 140**

### Potter Park Zoological Society Staff

Full Time Employees	12
Part Time Employees	7
Seasonal Employees	19

---

**Total Society Employees: 38**

### Internships

Zoo Interns	14
Conservation Interns	11
Event Interns	2

---

**Total 2024 Interns 27**

Together, the zoo team plays a critical role in advancing the mission of Potter Park Zoo by providing exceptional care for animals, creating meaningful guest experiences, and inspiring conservation of animals and the natural world.



# FUN YEAR-ROUND



Throughout every season, Potter Park Zoo provides engaging experiences and opportunities for excitement year-round.



# IN GRATITUDE

Potter Park Zoo and the Potter Park Zoological Society extend heartfelt thanks to the donors, sponsors, partners, and supporters who made 2025 a successful and impactful year.

Your generosity through grants, sponsorships, memberships, event support, and individual gifts directly strengthened animal care, conservation initiatives, education programs, and community access.

Because of your support, the zoo was able to invest in critical projects such as the Animal Health Facility, expand conservation efforts, enhance accessibility, and continue offering meaningful experiences for guests of all ages.

Every contribution, large or small, plays an important role in advancing the zoo's mission to inspire conservation of animals and the natural world.

Your commitment helps ensure that animals receive exceptional care, that conservation work continues locally and globally, and that the zoo remains a welcoming place for our entire community.

We are deeply grateful for the trust and support you place in Potter Park Zoo. Together, we are creating a lasting impact for wildlife, education, and future generations.

**Thank you for being an essential part of our work and our story.**

## **\$10,000 & Above**     **\$5,000 - \$9,999**

Jackson National Life Insurance Company

TechSmith Corporation

Georgia Elin Curry Estate

Geolnge Foundation

Marge and Jack Hetherington

McLaren Greater Lansing

University of Michigan Health Sparrow

Bartsch Memorial Trust

Joe D. Pentecost Foundation

Mary Frey

Paula Hoeft

Mary Sharp

Home Depot West Lansing Store

Emergent

MSUFCU

## **\$1,000 - \$4,999**

Yeo & Yeo CPAs & Advisors

Susan Andrews

Doris Asher

Kandy Bauer

Julie Brunner

SEI Private Trust Company

Lansing Parks Department

Frances Dittrich

Sue Eggleston

Jeff Florian

Red Oak Foundation

City of Lansing Neighborhood Grant

AF Group

Jake Hitchcock

Kevin Kendrick

Lansing Board of Water and Light

Ina Martin

Blaine and Virginia McKinley

Kristin Mellon

Judith Minich

Jeffrey Padden

David Rose

Granger Waste Services

Denice and Jerry Stoecker

The Kathy Tobe Trust

Felix Fliss and Constance Wardell-Fliss



## Donors \$999 - \$500

Sarah Allen  
James & Marilyn Armstrong  
Mid-Michigan Autism  
Association  
P.F. Chang's

Phillip & Julie Croll  
Georgia Curry  
Ronan Eustace  
Brian Johnson  
Carol Kessler  
C. Noah Koller

Mary Leys  
Ann Littleton  
Marcia Mettert  
Doris O'Dell  
Richard & Renate Snider

Judy & Lonny Snow  
Roxanne Truhn  
Jackie and Norm Wood  
Ron & Winalee Zeeb

## Donors \$499 - \$100

Holly Park and Windemere Park  
Charter Academy Holly Park  
Academy  
Marcie Jean Alling  
Rachel Asbury  
Don Ash  
Augenstein & Associates  
Neil Austin  
Rebecca Bahar-Cook  
Capitol National Bank  
Michael Bares  
Karlene Belyea  
Mary Belz  
Cheryl Bergman  
Jordan Brock  
Stephanie Brook  
Robert Burghdoff  
Sharon Burke  
Cathy Bush  
Nicholas Carbone  
Strictly Tile & Carpet Care  
Haslett Child Development Center  
Paul and Cindy Charette  
New Creation Church  
Kelly Coffey  
Lansing Housing Commission  
Sarah & Matt Comstock  
Hometown Heating and Air  
Conditioning Hometown Heating  
and Air Conditioning  
Elizabeth Connors  
Robin Cook  
Rachel Darnell  
Brigitte Davis  
Dyras Dental  
Nykamp Dental  
Positive Family Dental

Meijer - DeWitt  
Jason Dodson  
Jody Dorin  
Cynthia Douglas  
Diverse and Inclusive Collaborative  
Education  
Ron Emery  
Allison Farra  
Paul Faszczewski  
Tom James Ferris  
Brant Fisher  
Kelvin Fizzell  
Maribeth Fletcher  
Jessica Foerch  
Merritt Frey  
Catherine Gatewood-Keim  
Bethany Gielczyk  
Krys Grabarek  
Kevin & Sheri Gunns  
Susan Hall  
Lisa Harlan  
Jacque & Mike Harrington  
William & Christine Hartmann  
Mack Haun  
Clarence & Alice Hill  
Sue Hinkley  
Robin Hooks  
Marcia Hooper  
Nancy House  
Jim Hudgins  
Lansing Sanitary Supply, Inc.  
Midwest Communications, Inc.  
Evelyn Jackson  
John Stewart Jones  
Karen Kajiya-Mills  
Mitchell Kobus

Lori Kunze  
Patricia Lavolette  
Deborah Lawrence  
Carol Leary  
Marilyn Leary  
Lisette Lewandowski  
John Listermann  
Sostrin Immigration Lawyers, LLP  
Anna Longuski  
Lee Loreneen  
Michael Marhanka  
Mary McElheron  
Karen McGowan  
Gary McRay  
Jamie Mears  
Derek Melot  
Cynthia & Brett Meteyer  
Nancy Metzger  
Susan Meuche  
Robert Miller  
Teri Miller  
Molly Minnick  
Curt and Judy Munson  
Dr. Jacob Myers, D.D.S.  
Rosemary Nester  
Nancy Niles  
Janelle Orange  
Caitlin O'Rourke  
Allison Osman  
Kit Parker  
Lawrence Parker  
Lisa Parker  
Marilyn & Ron Payne  
Dara Philipsen  
Julie Pingston  
Katherine Powning

Elaine Putvin  
Patrick and Pamela Rawson  
Laura Ritchie  
Eila Roberts  
Jeff Sauer  
Suzanne Sawyer  
Erin Schor  
Debra Schutte  
William Scollon  
Darlene K. Scott  
Phyllis Shance  
Meghna Sharma  
Scott and Kate Skowronek  
Barbara Smith  
David and Jean Smith  
James Smith  
John and Jeannette Smith  
Jeff Sowers  
Alec Garza - State Farm  
Odd Nodd Art Supply  
Carol Tavormina  
Adna Technologies  
Zach Throckmorton  
Jeff Vincent Towler  
Two Men and a Truck  
Virginia Unkefer  
Virginia VandeVord  
Kevin VanGieson  
Ronald & Lillian Vanhouten  
Darryl Warncke  
Jim and Gail Warner  
Darcie Whiddon  
Judith White  
Kimberly Wiljanen  
Linda Wittmann  
Triterra



# 2025 POTTER PARK ZOO ADVISORY BOARD

Potter Park Zoo is guided by the leadership and expertise of the Zoo Advisory Board. Board members provide valuable insight, governance, and support that help advance the zoo's mission and long-term vision.

Through their service, board members contribute professional experience, community perspective, and strategic guidance that strengthen zoo operations, planning, and partnerships. Their commitment plays an

important role in ensuring Potter Park Zoo continues to serve the community while upholding the highest standards of animal care, conservation, and public engagement.

## 2025 Zoo Advisory Board

**Cheryl Bergman, Chair**

**Kyle Binkley, Vice Chair**

**Commissioner Todd Tennis**

**Commissioner Irene Cahill**

**Richard Snider**

**Mary Leys**

**Kacey Kent**

**Julie Pingston**

**Jack Kottwitz**

**Caitlin O'Rourke**

**Emily Linden**

**Samantha Harkins**

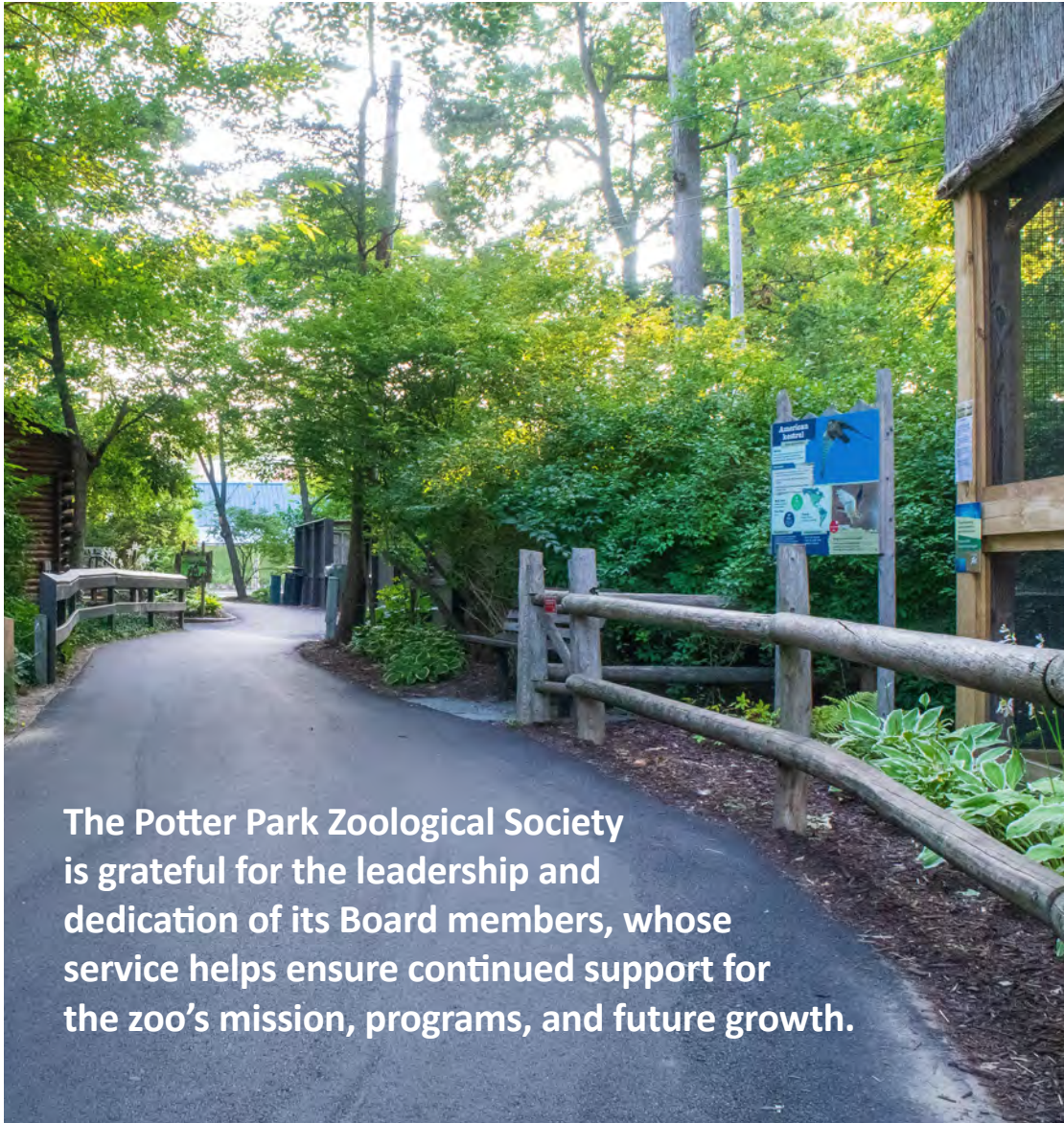
**Potter Park Zoo is grateful for the time, leadership, and dedication of its Advisory Board members, whose service helps guide the zoo's continued growth and impact.**

# POTTER PARK ZOOLOGICAL SOCIETY

The Potter Park Zoological Society supports the zoo's mission to inspire conservation of animals and the natural world. Through fundraising, education, and community engagement, the Society plays a vital role in strengthening programs

and experiences that benefit both animals and visitors. The Society raises funds by managing the zoo's membership program, producing family-friendly events, writing grants, conducting educational programs, and

coordinating fundraising initiatives. In addition, the Society supports zoo communications and volunteer coordination, helping expand the zoo's reach and impact throughout the community.



The Potter Park Zoological Society is grateful for the leadership and dedication of its Board members, whose service helps ensure continued support for the zoo's mission, programs, and future growth.

## Society Board

*Board Chair*

**Julie Pingston**

CEO, Greater Lansing Convention and Visitors Bureau

*Vice Chair*

**Aaron Davis**

Attorney and Shareholder, Butzel Attorneys and Counselors

*Treasurer*

**George Berghorn**

Faculty, Michigan State University

*Secretary*

**Karlene Belyea**

Vice President of Wellness for Mission Veterinary Partners

*Board Members*

**Gabe Rodriguez-Garriga**

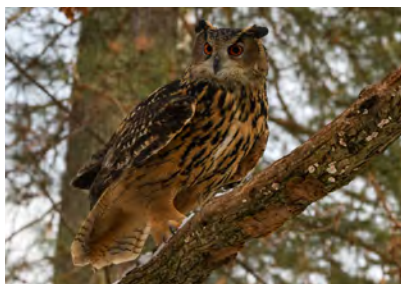
Vice President of Strategy and Environmental Analysis, Barton Malow

**Kieran Marion**

Vice President of Advocacy, Michigan Credit Union League and Affiliates

**Megan VanderMolen**

Manager, Jackson Enterprise Technology



# FUN FACTS

Potter Park Zoo is full of surprises, both big and small. Here are a few fun facts from 2025 that highlight just how much goes on behind the scenes and throughout the year!

## BY THE NUMBERS

**Hay consumed:**  
Over 2,000 bales of hay helped keep our animals healthy and well-fed.

**Fish fed:**  
More than 6,428 pounds of fish.

**Meat served:**  
Approximately 9,800 pounds of meat were prepared for carnivorous species.

**Dippin' Dots enjoyed:**  
Guests consumed 64,064 ounces of Dippin' Dots last summer. Based on average size and density, that equals roughly 28.8 million individual ice cream beads.

**Plush animals adopted:**  
Zoo visitors adopted 13,228 plush animals, giving them new homes beyond the zoo.

## Wind Tunnel Storms

The Wind Tunnel ran 1,512 storms, totaling 6,048 minutes (just over 100 hours) of winds reaching speeds up to 89 mph. That's enough wind to theoretically travel nearly 9,000 miles. This is roughly the distance from Lansing to Madagascar, home to ring-tailed lemurs!



## Boo at the Zoo candy count:

During three weekends, guests received approximately 542 bags of candy, totaling nearly 89,400 pieces and over 1,984 pounds of sweet treats.

