

POTTER PARK



# ANNUAL REPORT 2022

Potter Park Zoo  
1301 S. Pennsylvania Ave.  
Lansing, MI 48912

Phone: 517.483.4222  
Fax: 517.316.3894  
[www.potterparkzoo.org](http://www.potterparkzoo.org)







During 2022 **184,886** people  
visited Potter Park Zoo.

Potter Park Zoo had a successful year with a total of 184,886 visitors. It was great to see so many people enjoying the zoo and we look forward to welcoming even more visitors in the future.

## INCENTIVE DAYS 2022

*Number of free or reduced admissions*

Mother's Day	621
Father's Day	315
Veterans Day	52
Zoo Days	3,365
College Day	96
Ingham County Free Day	586
Ingham County Free Monday Mornings	4,413

ACCREDITED BY THE  
**ASSOCIATION  
OF ZOOS &  
AQUARIUMS**

Potter Park Zoo has been accredited by the AZA for over 30 years. We are proud to continue to meet and exceed the standards set by AZA in animal welfare, veterinary care, conservation, education, guests services and more. We pride ourselves on being an enriching educational resource for our community.



# TABLE OF CONTENTS

<b>2</b>	Letter from the Directors
<b>4</b>	Our Animals
<b>5</b>	Conservation
<b>6</b>	Veterinary Highlights
<b>8</b>	Accessibility
<b>9</b>	Education Programs
<b>10</b>	2022 Events
<b>11</b>	Volunteers & Members
<b>12</b>	Marketing & Communications
<b>13</b>	Zoo Team
<b>14</b>	Donor Recognition
<b>16</b>	Zoo Board & Finances
<b>17</b>	Potter Park Zoological Society





## MISSION

*Inspiring conservation  
of animals and the  
natural world.*

**POTTER PARK**



## OUR GOALS

*Excellent Animal Welfare  
Impactful Conservation  
Financial Sustainability  
Valuing Diversity*



**A letter from  
Cynthia Wagner,  
Potter Park Zoo  
Director and  
Amy L. Morris-Hall,  
Potter Park  
Zoological Society  
Director**

Potter Park Zoo had some incredible achievements in 2022. Our talented staff and volunteers have been working tirelessly to provide a safe and enriching environment for our visitors to connect with the natural world, and we couldn't be more appreciative of their dedication and hard work.

We are especially excited to celebrate the incredible success of our fund development team, who have secured critical funding to support the health and well-being of all our animals. Thanks to their relentless efforts, we are now closer than ever to building a new animal health facility at the zoo!

Conservation engagement through Conservation Education Stations became a true highlight of our visitors' experience. With the help of our amazing volunteers, we engaged with over 65,750 guests in 2022 alone, sharing important conservation actions that they can implement in their own lives, making real change in the world.

We welcomed 14 new animals to the zoo, including majestic kestrels, colorful red-eyed tree frogs, and a colorful (and threatened) Jamaican boa. But that's not all – we're also over the moon about welcoming a pair of adorable bintlets (baby binturong), playful cotton-top tamarin babies and a stunning red panda cub to our growing family! These new arrivals are a testament to our unwavering commitment to animal welfare and conservation and the high quality of care each animal receives. We couldn't be more honored to provide a safe and nurturing environment for all of the animals in our care.

Without the support of our amazing community none of this would have been possible, and for that, we are truly grateful. As we look forward to the future, we are committed to continuing our mission of inspiring conservation of animals and the natural world. We know that with your continued support, we will achieve even more in 2023 and beyond!

Sincerely,

Thank you for joining us on this exciting journey.



**Cynthia D. Wagner, Zoo Director**



**Amy L. Morris-Hall, Zoological Society Director**

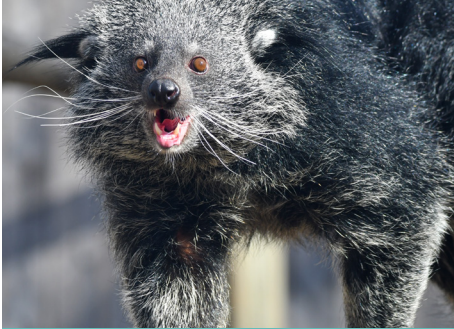




**377 Animals**



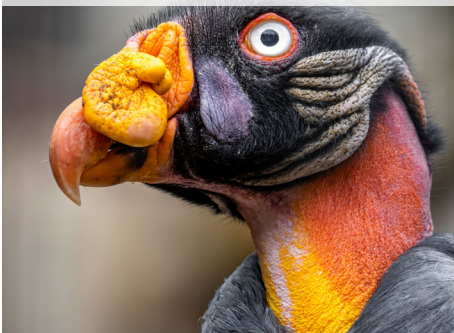
**86 Species**



**140 Reptiles/Amphibians**



**98 Birds**



**135 Mammals**



# OUR ANIMALS



## New Arrivals

Potter Park Zoo had 14 new arrivals in 2022. Notable new species include the American kestrel, timber rattlesnake, red-eyed tree frogs, Jamaican boa, and Magellanic penguin. We also saw seven births including two binturong, two cotton-top tamarin, a red panda, a bongo calf, a ring-tailed lemur, and just under 2,000 tadpoles.





# CONSERVATION IN ACTION

At Potter Park Zoo we are incredibly passionate about our conservation efforts. We're making an impact by contributing to scientific research, field work, and donating funds to conservation organizations.

## Funds Raised for Conservation in 2022

Quarters for Conservation	\$854.66
Conservation Bookmark Sales:	\$3,849
Bowling for Rhinos (Event hosted by AAZK):	\$7,000
World Rhino Day Barn Tours:	\$539



## Contributions to Conservation Field Work

- Breeding and release of critically endangered Puerto Rican Crested Toads
- Rhinoceros Research with CREW (Linder Center for Conservation and Research of Endangered Wildlife)
- Eastern Massasauga Rattlesnake Field Research
- USFWS Recovery Program for the Great Lakes Piping Plover
- The Washtenaw County Conservation District and project partners the National Academy of Sciences and Ministry of Environment, Armenia; and Pokhara University, Nepal

Potter Park Zoo continually supports many conservation organizations.





## *2022 was an exciting year of change for the veterinary department.*

*Dr. Ronan Eustace, Director of Animal Health, passed the ACZM examination to qualify to be a board certified specialist in zoological medicine™. He is now a Diplomate of the American College of Zoological Medicine and joins the less than 300 zoo veterinarians worldwide with this qualification. For Dr. Eustace, this has been an almost decade long process of writing scientific publications, summarizing over thousands of scientific articles and multiple zoo, wildlife, fish, and aquatic medicine textbooks.*

The PPZ veterinary department also grew with the formation of a joint zoologic medicine fellowship with the Binder Park Zoo. Dr. Allison Dianis, the inaugural veterinary fellow, spends 30% of her time working with the PPZ veterinary department. In addition to helping with clinical cases, Dr. Dianis is working on multiple research projects. Her initial project was an anesthetic study on African Painted dogs and the manuscript is soon to be published in the Journal of Zoo and Wildlife Medicine.



### *Animal Care Facility Funding Obtained*

Funding for the new animal care facility was also obtained and the planning process, which should take most of 2023, has begun. Dr. Ronan has started to purchase items that can fit in the current clinic and will be needed in the new hospital, including new radiology (x-ray) equipment, a stainless steel cabinet, and a portable surgery light. A Michigan Arts and Culture Council grant was obtained which partially funded the upgrade of the zoo veterinary radiology (x-ray) imaging equipment and the zoo purchased the Vet Rocket imaging system to replace the decade old slower system. This radiology equipment will store the data more securely and is about 30x faster, which will shorten the time that animals need to be maintained under anesthesia.

### *Scientific Publications*

2022 was a fruitful year for research for the PPZ veterinary department with six scientific publications submitted or accepted for publication. In addition, the veterinary and hoof stock department worked together to participate in a multi-institutional Black rhinoceros estrus synchronization study led by Dr. Monica Stoops, senior researcher at Omaha's Henry Doorly Zoo and Aquarium. This was a 4 month study that required feces collection, blood collection, and transrectal ultrasounds on Doppsee. It was a large amount of work but so important as this study is the first step in developing techniques to allow artificial insemination protocols to be created for Black rhinoceros—a process that could help save this species from extinction!

### *SARS COV2 Study.*

In addition, the veterinary department is participating in a multi-zoo USDA APHIS led study on SARS COV2, the etiologic agent for the global pandemic. The veterinary department started to identify hundreds of banked blood samples collected from zoo animals before and after the pandemic. This study will provide valuable information on which animals can be infected by SARS COV2 and could be instrumental in lessening future pandemics.







Finally, the PPZ veterinary department worked with three other Michigan AZA zoos to study the use of a novel SARS COV2 animal vaccine in goats—a vital step to determine the efficacy of this vaccine for use in other hoof stock species. The scientific publication is planned to be submitted to the American Journal of Veterinary Research in the next month:

- Evaluation of humoral responses in domestic goats (*Capra hircus*) following administration of an experimental SARS-CoV-2 vaccine. Rooney, T.A., Cervený, S., **Eustace, R.**, Colburn, R., Diel, D.G., Hardham, J. and K. Thompson. *Manuscript in preparation for American Journal of Veterinary Research.*

Multiple ongoing studies were published, including two from Dr. Bridget Walker, a former zoo docent and summer veterinary student who worked with the zoo veterinary department while she was at MSU CVM. Dr. Walker is now the 1st year U of M zoo medicine resident. As a result of her summer research work with Dr. Ronan, she published:

- Degenerative Cardiomyopathy in two species of tortoises (*Chelonoidis nigra*, *Aldabrachelys gigantea*, *Centrochelys sulcata*). Walker, B., **Eustace R.**, Thompson, K.A., Schiller, C.A, Leone, A., and M. Garner. *Manuscript accepted for publication with Journal of Zoo and Wildlife Medicine.*
- Two cases of soft tissue sarcomas in captive Canadian moose (*Alces alces*). Walker, B., **Eustace, R.**, Junge, R.E, Hsu, S., and V. Watson. 2022. *Journal of Veterinary Diagnostic Investigations* 34 (4): 662-667
- Validation of chemiluminescent assay for canine thyroid stimulating hormone in Red pandas (*Ailurus fulgens fulgens*). Walker, B., **Eustace, R.**, Thompson, K. A., and B. Petroff. 2021. *Journal of Zoo and Wildlife Medicine* 51(4): 1021-1024.

Multiple other studies that were completed in 2022, including a review paper that summarizes the information learned from the case management from the PPZ lion Saidia. Also, a study that will help refine contraceptive methods in zoo species, which is integral to creating sustainable captive populations in zoos, was performed.

- Development and validation of deslorelin acetate assay, pharmacokinetics of deslorelin acetate implant, and fecal hormone monitoring in the domestic goat (*Capra hircus*). Rooney, T.A., Buchweitz, J., Lehner, A., Thompson, K. A., **Eustace, R.**, Kozlowski, C., Clawitter, H., McDonald, M., Franklin, A., Powell, D., Zyskowski, J. and D. Agnew. *Manuscript in preparation for Journal of Zoo and Wildlife Medicine.*
- Intervertebral disc disease in three large felids (*Panthera* spp.) treated surgically. Wright, E.M., **Eustace R.**, Cushings, A.C. and E. Ramsay. *Manuscript under review with Journal of Zoo and Wildlife Medicine.*

2023 will continue to be a busy year with continued upgrades to the clinic equipment, more planning of the new veterinary animal center, and multiple new research projects beginning. Research is a critical component of modern AZA-accredited zoos and the PPZ veterinary department is committed to fostering the next generation of zoo veterinarians and performing research that will improve the sustainability and welfare of zoo animals.



# ACCESSIBILITY

CREATING A WELCOMING  
EXPERIENCE FOR VISITORS  
OF ALL AGES AND ABILITIES.

## OUR PROGRAMS



### FALCONERS

This monthly program is designed for individuals with unique challenges (including physical, cognitive, behavioral, emotional and others) and their families to create memories in a safe and welcoming environment. Events are free and designed with sensory-friendly and inclusive activities supervised by trained staff and volunteers.

**1160**

Total Participants



### ZIYN

Zoo in Your Neighborhood (ZIYN) provides free programs to members of our community by visiting community partner locations. Each partner receives one program annually and six family passes that can be checked out for free admission to the zoo. 2022 was our largest year for ZIYN – 2,240 children and 2,613 adults entered using a pass.

**1311**

Zoo Passes  
Checked Out

## Promoting Literacy



## Increasing DEAI



In 2022, with the guidance of our Community Engagement and Inclusion Specialist, we continued to increase our Diversity, Equity, Access and Inclusion (DEAI) by creating a DEAI committee. The committee consists of employees representing different departments at the zoo. With the guidance of our Community Engagement and Inclusion Specialist, we continued to increase our DEAI efforts. From new employee guidelines to support nursing mothers, creation of our DEAI Strategic Plan, supporting our team's mental health, adding pronouns to name badges, and creating a demographic survey for our guests, we strive to be an inclusive zoo for all. Adding a "Little Free Library" to our park continues to be successful in promoting literacy to those who visit our park and zoo. Over 250 books were given out through the library which is accessible from the park to anyone who would like to use it. Community members have helped keep the library filled with books by contributing their own books.



# EDUCATION PROGRAMS

INSPIRING CONSERVATION OF ANIMALS AND THE NATURAL WORLD



708

Students  
31 classes

## THE BIG ZOO LESSON

This award-winning, immersive science education program is highly regarded by teachers, students, parents and administrators. Students have the opportunity to be scientists at the zoo for a full week. This program is at maximum capacity with 18 schools from 10 school districts participating.



256

Participants  
5 sessions

## SUNDOWN SAFARI

Sundown Safari gives families and small groups an opportunity to spend a night at the zoo, and includes a guided tour, campfire snacks, outdoor movies, and a continental breakfast.



36

Unique Learners

## ZOO CREW

A new offering this year, the Homeschool Zoo Crew provides an opportunity for homeschooled learners ages 5-12 to come to the zoo and learn about topics such as habitats, adaptations, ecosystems, and animal life cycles.



97

Participants

## ENCOUNTERS & OUTREACH

The education department educates and inspires tens of thousands of people both on and off zoo grounds each year about the importance of wildlife conservation and the actions we can take to do our part. These programs take many forms: live animal encounters, Scout programs, birthday parties and private events.



333

Summer Camp  
Participants

## ZOOKAMBI SUMMER CAMP

The zoo's popular summer camp has been providing fun, entertaining and educational experiences for more than two decades! Camps are available for students entering grades 1-7.



36

Students

## ANIMAL SCIENCE & ZOO MANAGEMENT

The 2021-22 school year represents our 15th year hosting a high school course in partnership with Eaton RESA. PPZ is fortunate to be one of the few AZA institutions to host an on-site high school course. These programs take many forms including educating with pelts and artifacts, Scout programs, as well as public and private events.



# SPECIAL EVENTS



## ICE SAFARI

2,670 Guests



## ZOO DAYS/NIGHTS

4,480 Days Guests

2,436 Nights Guests



## MEMBERS NIGHTS

522 Guests



## FALL ZOOTACULAR

7,332 Guests



## PRIVATE EVENTS

4,455 guests



## WONDERLAND OF LIGHTS

12,258 Guests





# VOLUNTEERS

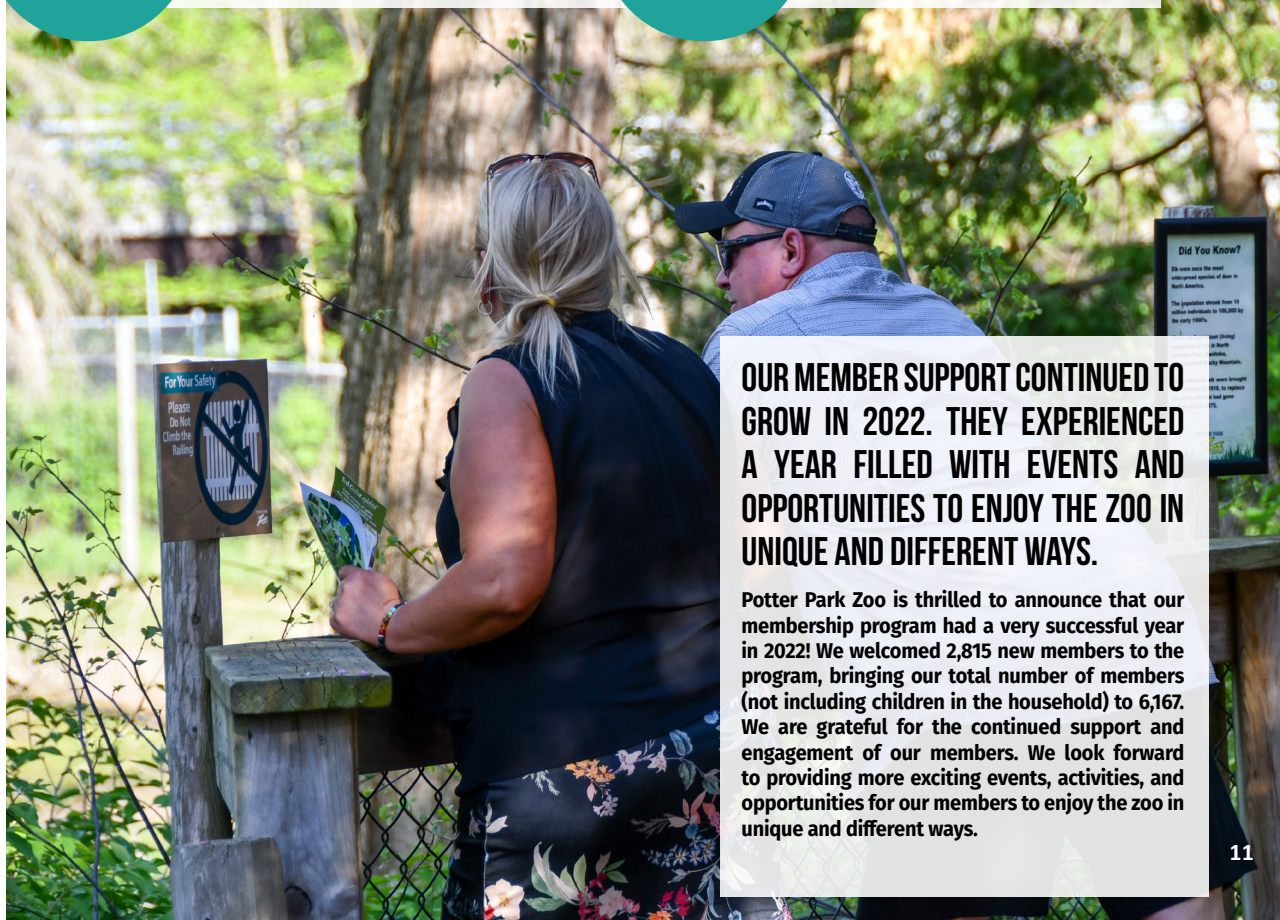
**2,815**

**Memberships Sold**

**6,167**

**Total Members**  
(not including children in households)

# MEMBERS



**OUR MEMBER SUPPORT CONTINUED TO GROW IN 2022. THEY EXPERIENCED A YEAR FILLED WITH EVENTS AND OPPORTUNITIES TO ENJOY THE ZOO IN UNIQUE AND DIFFERENT WAYS.**

Potter Park Zoo is thrilled to announce that our membership program had a very successful year in 2022! We welcomed 2,815 new members to the program, bringing our total number of members (not including children in the household) to 6,167. We are grateful for the continued support and engagement of our members. We look forward to providing more exciting events, activities, and opportunities for our members to enjoy the zoo in unique and different ways.



# COMMUNICATIONS



**FACEBOOK**

Facebook Followers: 69,122  
Reach: 2,684,214



**TWITTER**

Twitter Followers: 9,359  
Impressions: 981,500



**INSTAGRAM**

Instagram Followers: 28,726  
Impressions: 1,674,665

## Wow, what a year 2022 was for social media!

It was simply amazing to see how Wilson, the red panda cub, captured the hearts of hundreds of thousands of fans around the world with his adorable personality and fluffiness. It's amazing to see how people are drawn to the innocence and cuteness of animals. And let's not forget about Nkeke and Miles, our North American river otters, who also made a big impact with their playful and inspiring personalities. We are truly grateful and proud of the positive impact our animals have had on the world. And we are beyond excited for what's to come in the next year! Get ready, world, as we have many more incredible animals that are eager to share their unique personalities and stories with you!



### Most visited pages

1. Home
2. Ticket Sales
3. Membership
4. Today's Attractions
5. Events
6. Animals

## Website

Total page views:

**745,689**

### Top online visitors by city

1. Lansing
2. Detroit
3. Ashburn
4. New York
5. Grand Rapids
6. East Lansing



# ZOO TEAM 2022

Potter Park Zoo makes an economic impact by employing over 150 community members, as well as being a vital educational resource for the many interns learning throughout the zoo.

## Ingham County

Full Time Employees	30
Part Time Employees	1
Seasonal Employees	84

---

Total Zoo Employees: 115

## Zoo Society

Full Time Employees	9
Part Time Employees	3
Seasonal Employees	5

---

Total Zoo Employees: 17

## Interns

Animal Care Interns	10
Conservation Interns	15
Media Interns	1
Special Events Intern	2

---

Total 2022 Interns 28





# IN GRATITUDE

Potter Park Zoo and the Potter Park Zoological Society greatly appreciate the generous donors who supported the organization this year through grants, sponsorships, donations and other gifts. We would not be where we are today without your generous support!

## **\$10,000 & Above**

**Jackson National Life  
Bartsch Memorial Trust  
Michigan Arts & Culture Council**

## **\$5,000 - \$9,999**

**Ray & Cathy Berry  
Marjorie Easton  
Miecznikowski Family Gift Fund  
DeWitt Meijer - Store #209**

## **\$1,000 - \$4,999**

**Red Oak Foundation  
Marge & Jack Hetherington  
Jeff Williams & Joy Whitten  
Yeo and Yeo PC - Lansing  
Darlene Nikoloff  
Georgia Curry  
Jeffrey Padden  
Doris Asher  
Frances Dittrich  
Nancy House  
Jeff and Cindy Nussdorfer  
Mid-Michigan Safari Club  
Debra Schutte**

## **\$999 - \$100**

**Sarah Allen  
Marcie Jean Alling  
Catherine Amick  
Susan Andrews  
Shannon Armbruster  
James & Marilyn Armstrong  
Augenstein & Associates  
Tyler Augst  
Halima Awale  
The Barre Code - East Lansing  
Ruby Bellosillo  
Karlene Belyea  
Cheryl Bergman  
Barbara Bolas  
Nicholas Bolhouse  
Ron Emery & Sherry Bond  
Bonnie Boyd  
Marc Breedlove  
Gayle Brown  
Ronald Browning  
Sharon Burke  
Sally Burroughs  
Ann Carlson  
Dan and Charlotte Catlin  
Paul and Cindy Charette  
New Creation Church  
City of Lansing Neighborhood Grant  
Barry & Jennifer Collins  
Sarah & Matt Comstock  
Sandi Cook  
Mary Jo Corbett  
Phillip and Julie Croll  
Rachel Darnell  
Patricia DeMaria  
Dyras Dental  
Jody Dorin-DeLong & Family**



Lisa Edgerton  
Derek Elder  
Emergent BioSolutions  
Paul Faszczewski  
Tom Ferris  
Fish Window Cleaning  
Brant Fisher  
Maribeth Fletcher  
Lynda Foote  
Denise Goodman  
Krys Grabarek  
Pam Grandmaison  
Kevin & Sheri Gunns  
Nicholas Haberman  
Diane Hansen-McDermott  
Jennifer Hardy  
William & Christine Hartmann  
Mack Haun  
Beverly Hempel  
Arnold Hennig  
Heidi Hilliard  
Sue Hinkley  
Dick Hinshon  
Victoria Hoelzer-Maddox  
Jo Holbrook  
Marcia Hooper  
HomeLight Inc.  
Lansing Sanitary Supply Inc.  
Evelyn Jackson  
Kyleen Janetzke  
Brian Johnson  
Richard Johnson  
Douglas Kahl  
Karen Kajiya-Mills  
Kevin and Jenny Kendrick  
Nicholas Knudstrup  
Mitchell Kobus  
C. Noah Koller  
Lansing and Windemere Park  
Charter Academy

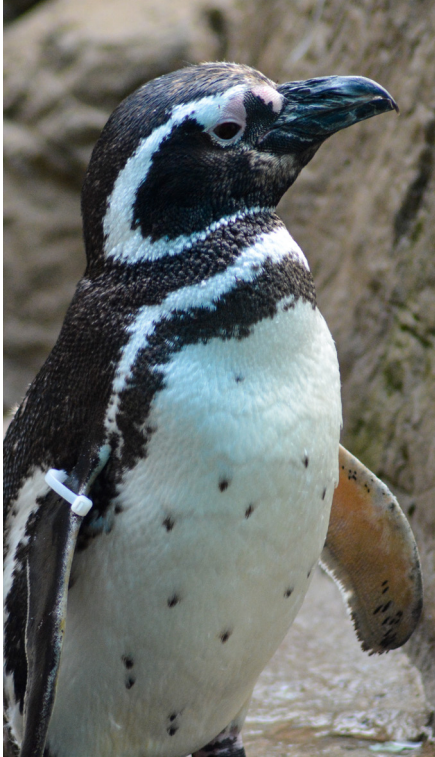
Patricia Lavolette  
Lisette Lewandowski  
Lansing Lodge #33  
Anna Longuski  
Lee Loreneen & Family  
Kim Lytle  
Manipulative Medicine  
Martha Marshall  
Duane Hartman & Cheryl Martin  
Eduardo & Mariah Martinez  
Charles Massoglia  
Karen McGowan  
Blaine & Virginia McKinley  
Derek Melot  
Marcia Mettert  
Cindy Meyer  
Larry and Gail Meyer  
Teri Miller  
Patricia Miller  
Robert Miller  
Molly Minnick  
Eric Mollon  
Natalie Moser  
MSU Health Care Osteopathic  
Dr. Jacob Myers, D.D.S.  
Susan Nearing  
Pamela Nelson  
Rosemary Nester  
Kelly Niebel  
Nancy Niles  
Doris O'Dell  
Allison Osman  
Kit Parker  
Lawrence Parker  
Lisa Parker  
Marilyn & Ron Payne  
Julie Pingston  
Ann Powers  
Katherine Powning  
PrepNet Virtual Academy

Annette and Rick Pritchett  
Siri Rainone  
REACH Studio Art Center  
Sue Reszka  
Shirley Robinson  
Lauren Schefke & Family  
Mark & Fritz Schlicker  
Erin Schor  
Darlene Scott  
Meghna Sharma  
Mary Sharp  
David and Jean Smith  
James Smith  
Barbara Smith  
Richard & Renate Snider  
Judy & Lonny Snow  
Kate Snyder  
Robin Soergel  
Jeff Sowers  
Mr. & Mrs. Chad Spawr  
Denice Stoecker  
Suzy's Nature Study  
Denise Swanson  
Catherine Allen & Bing Tai  
Maresa Tedrick  
Diane Thompson  
Cheryl Trognus  
Two Men and a Truck  
Roxanne Truhn  
Jennifer Uitvlugt  
Virginia VandeVord  
Darryl Warncke  
Amanda Weigold & Family  
Brenda S. White  
WLNS  
Catherine Wood  
Jacqueline Wood  
YMCA Metropolitan Lansing  
Ron & Winalee Zeeb





# 2022 POTTER PARK ZOO ADVISORY BOARD



## Potter Park Zoo Budget/Actual Report - Final Unaudited For the Year Ended 12/31/22

	<u>2022 BUDGET</u>	<u>2022 ACTUAL</u>
<b>REVENUES</b>		
PROPERTY TAX	\$ 4,150,873	\$ 4,026,382
ADMISSIONS	625,000	716,798
PARKING	185,000	162,954
CONCESSIONS, GIFT SHOP, VENDING	510,000	835,464
OTHER REVENUES	750,586	356,538
<b>TOTAL REVENUES</b>	<u>4,940,287</u>	<u>5,957,550</u>
<b>EXPENDITURES</b>		
PERSONNEL SERVICES	3,154,790	3,313,952
CONTROLLABLE EXPENDITURES	1,934,542	1,599,034
NON-CONTROLLABLE EXPENDITURES	508,644	532,749
CAPITAL OUTLAY	657,689	68,889
<b>TOTAL EXPENDITURES</b>	<u>4,940,287</u>	<u>5,514,624</u>
<b>TOTAL CHANGE IN FUND BALANCE</b>		442,926
<b>FUND BALANCE AS OF 1/1/21</b>		
NON-SPENDABLE		\$ 68,592
UNRESTRICTED		1,593,86
		<u>\$ 1,662,454</u>
<b>FUND BALANCE AS OF 12/31/21</b>		
NON-SPENDABLE		\$ 68,592
UNRESTRICTED		2,036,788
		<u>\$ 2,105,380</u>

## Zoo Board

Commissioner Chris Trubac

Commissioner Todd Tennis

Cheryl Bergman, Chair

Kyle Binkley, Vice Chair

Dr. Richard Snider

Mary Leys

Molly Korn

Julie Pinkston

Jack Kottwitz

Cynthia Wagner

*Zoo Director*





# POTTER PARK ZOOLOGICAL SOCIETY

The mission of the Potter Park Zoological Society is to support the zoo's mission to inspire conservation of animals and the natural world. The Society raises funds by managing the membership program, producing family events, grant writing, conducting educational programs and coordinating fundraising activities. Other Society functions include managing zoo communications and zoo volunteers.

## Potter Park Zoological Society Statement of Activities & Changes in Net Assets Year Ended 12/31/21

	Without Donor Restrictions	With Donor Restrictions	Total
<b>Revenues:</b>			
Special events	\$ 268,223	-	268,223
Contributions	131,324	626,973	758,297
Education	143,821	-	143,821
Fundraising income	35,316	-	35,316
Administration	21,667	-	21,667
Paycheck Protection Program grant	106,200	-	106,200
Membership	223,007	-	223,007
Volunteer services	157,541	-	157,541
Zoo support	175,091	-	175,091
Net assets released from restrictions	90,635	(90,635)	-
	<u>1,352,825</u>	<u>536,338</u>	<u>1,889,163</u>
<b>Expenses:</b>			
Program			
Education	330,753	-	330,753
Memberships	35,727	-	35,727
Volunteer services	171,737	-	171,737
Zoo support	291,740	-	291,740
Management and general	200,269	-	200,269
Fundraising	148,299	-	148,299
	<u>1,178,525</u>	<u>-</u>	<u>1,178,525</u>
Change in net assets	174,300	536,338	710,638
Net assets, beginning of year	160,547	39,158	199,705
Net assets, end of year	\$ <u>334,847</u>	<u>575,496</u>	<u>910,343</u>

## Society Board

*Board Chair*

**Julie Pingston**

CEO, Greater Lansing  
Convention and Visitors Bureau

*Vice Chair*

**Aaron Davis**

Attorney and Shareholder,  
Fraser Trebilcock

*Treasurer*

**George Berghorn**

Faculty, Michigan State  
University

*Secretary*

**Karlene Belyea**

Vice President of Wellness for  
Mission Veterinary Partners

**Bethany Wicksall**

Director of Legislative and  
External Affairs, State Budget  
Office

**Roxanne Truhn**

Retired, Michigan State  
University

**Gabe Rodriguez-Garriga**

Vice President of Strategy,  
Business Leaders for Michigan





# FUN FACTS

Zoo animals have eaten over  
**2,500** bales of hay,  
**9,000** pounds of meat and  
**8,000** pounds of fish in 2022.



**12,492**

Throughout the year, the gift shop  
sold enough plush animals to create a  
cuddlycreature chain that could wrap  
around the zoo twice!

**14,150**

The Savanna Grill served up  
a staggering 14,150 delicious  
ice cream cones.



POTTER PARK  
**ZOO**

Potter Park Zoo  
1301 S. Pennsylvania Ave.  
Lansing, MI 48912

Phone: 517.483.4222  
Fax: 517.316.3894  
[www.potterparkzoo.org](http://www.potterparkzoo.org)